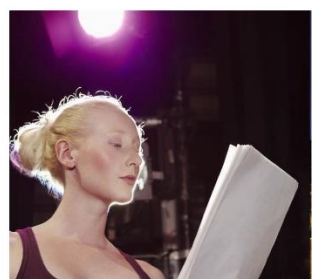


TRAVELBOUND EDUCATION



TAILOR-MADE EDUCATIONAL TOURS FOR SCHOOLS AND COLLEGES

LITERATURE TOUR

SAMPLE ITINERARY

UNITED KINGDOM

THREE REASONS TO CHOOSE TRAVELBOUND EDUCATION

1. WE HELP YOU ORGANISE YOUR SCHOOL TOUR

Your role as tour leader can seem daunting (especially on top of your busy job as a teacher), so we will provide you with any of the following items to optimize your tour launch.

- Step-by-Step launch process (how to get your trip off the ground)
- Letter to parents template (you can just fill in the blanks)
- Sister school partnerships (We can help connect the dots for you)
- Posters (to advertise your trip)
- Risk Assessments (to help you complete any necessary paperwork)
- PowerPoint Presentation (promote your destination!)
- Fundraising information (to help families kick-start their campaigns)

2. WE HAVE PROVEN EXPERTSE IN TRAVEL

Every year 20,000 happy, worldly and educationally enriched students return from subject related tours which Travelbound Education has helped custom build for each school. We're deeply proud of our solid reputation built from over 25 years in the travel education industry. Experience which we use to provide personal, friendly and expert service, which helps make your tour idea a reality.

3. OUR COMMITMENT TO SAFETY AND SECURITY

- **Safety Management Systems** – Our risk assessments are carried out using reliable, accredited and independently verified resources. This audit process is used for all accommodation, excursions and transport providers.
- **On-tour representation (with 24/7 support)** – A Travelbound representative will meet you in-country, and when on tour you will have access to a 24-hour emergency duty office to speak with highly trained staff.
- **Financial Security** - As part of the world's largest leisure company, TUI Travel PLC, Travelbound provides financial protection to all school groups and further, we are fully ATOL bonded.
- **Worldwide offices, global reach** – UK, Australia, New Zealand, Asia, Middle East and USA
- **Responsible travel** – It is our responsibility as an educational tour operator to consider the environment, economy and culture of our destinations as of paramount importance, and our very own eco-tourism specialist is dedicated to help reduce our impact.

WHAT HAPPENS NEXT

This tour is a mini-project, and to give this project the best chance of success:

1. **Take 10-minutes to review this itinerary** and let us know of any amendments (or ideas!) to improve it.
2. **Confirm an Itinerary and provisional Departure Date** to allow the opportunity for Travelbound to create a customized quote that fits your school criteria.
3. **Money matters...so build in a buffer** between the amount per student and your final number (Use this to buy additional meals, pay for public transport or shout the students a special treat in-country!).
4. **Raise interest with students and families** allowing maximum time for families to get on board.
5. **Confirm your booking:** Contact us to confirm student interest with completed booking forms and provisional deposits to lock in your quoted amount.
6. **Coordinate the tour:** Your tour coordinator will be your main point of contact to discuss the finer details of your trip. They will forward a confirmation pack and book all the components of your tour ensuring a trip of a lifetime.

ITINERARY- United Kingdom *(Literature)*

Day 1	<p>AUCKLAND → LONDON</p> <ul style="list-style-type: none"> • Depart Auckland for London <p><i>Overnight Travelling</i></p>
Day 2	<p>→ LONDON</p> <ul style="list-style-type: none"> • Arrive in London • Meet and greet at airport • Coach transfer to Hotel for Check in • Bloomsbury Literary tour- On this walking tour, you will see where Charles Dickens lived, worked and found inspiration. As the name suggests, this is where the group of artists who became the Bloomsbury group formed. You will see the home of Virginia Woolf, and her artist-sister Vanessa Bell, and the locations where their friends had famous Thursday evening gatherings to discuss art, literature and other essential matters. Other artists that feature on the walk include T.S. Eliot, Roger Fry, E.M. Forster and Duncan Grant. • Charles Dickens Museum- the Museum is an international centre for research on Charles Dickens. It contains the world's finest and most comprehensive collection of material relating to his life and work, with over 100,000 items including furniture, personal effects, paintings, prints, photographs, letters, manuscripts, and rare editions. • Dinner back by the Hotel <p><i>Overnight London</i></p>
Day 3	<p>LONDON</p> <p>Breakfast at Hotel</p> <ul style="list-style-type: none"> • Shakespeare's Globe Theatre- a unique international resource dedicated to the exploration of Shakespeare's work and the playhouse for which he wrote. Students will have a 30 minutes guided tour of the theatre revealing the story of its reconstruction and be given an exciting insight into how the 'wooden O' works today as an imaginative and experimental theatrical space. • St Paul's Cathedral- Built on a site sacred for two millennia, this glorious 17th-century cathedral is one of Britain's most beloved buildings. St Paul's Cathedral is the resting place of some of Britain's greatest heroes. • Free time for Lunch before afternoon activities • Westminster Abbey- Westminster Abbey has hosted special occasions such as Coronations, Royal Weddings and Memorial Services for hundreds of years. The Abbey features spectacular Gothic architecture both inside and out. With over 3,000 people buried here and many others commemorated via Memorials there is much to explore. Poets Corner, where a wide range of literary figures are commemorated including C.S. Lewis, William Shakespeare and Charles Dickens is a must see for students on this trip. • Buckingham Palace- the London residence and administrative headquarters of the reigning monarch of the United Kingdom. The palace is often at the centre of state occasions and royal hospitality. <p><i>Overnight London</i></p>

Day 4 Meal Inclusions: <i>Breakfast</i>	LONDON Breakfast at Hotel <ul style="list-style-type: none"> • Harry Potter Studio Tour- the Harry Potter film series made Leavesden its home for more than ten years. Students have the opportunity at their own pace to view the stunning costumes, breathtakingly detailed sets and intricate props that fill the studios two soundstages and backlot area. • Tower of London- The Tower of London is a UNESCO World Heritage Site. In the past, the tower functioned as a prison, the royal residence and as a fortress. Nowadays, the tower is still in royal possession and guided tours are available to give pupils an insight into its dark history. <i>Overnight London</i>
Day 5 Meal Inclusions: <i>Breakfast</i>	LONDON Breakfast at Hotel <ul style="list-style-type: none"> • London Eye- The world's biggest Ferris wheel and one of the most popular attractions in the UK with an amazing 360° view over London. • Oxford Street- Free time for the students to explore Europe's most popular shopping area with over 300 shops and services. • London West End show- Les Miserable- based on the famous novel written by Victor Hugo. <i>Overnight London</i>
Day 6 Meal Inclusions: <i>Breakfast</i>	LONDON—STONEHENGE-- BATH Breakfast at Hotel before coach transfer to Bath via Stonehenge <ul style="list-style-type: none"> • Stonehenge- Students have the chance to view one of Britain's Cultural Icons. Explore the ancient landscape on foot and step inside the Neolithic Houses to discover the tools and objects of everyday Neolithic life. Visit the world-class exhibition and visitor centre with 250 ancient objects and come face to face with a 5,500 year-old man. • Jane Austen Centre- an exhibition that explores Jane's time in Bath and the influence that this beautiful city had on her books, characters and life. <i>Overnight Bath</i>
Day 7 Meal Inclusions: <i>Breakfast</i>	BATH--OXFORD Breakfast at Hotel <ul style="list-style-type: none"> • Roman Baths- remarkably preserved remains of one of the greatest religious spas of the ancient world. The city's unique thermal springs rise in the site and the Baths still flow with natural hot water. • Lacock Abbey- the location of many Harry Potter filming scenes. • Oxford Castle- The castle played an important role in the conflict of the Anarchy. In the 14th century the military value of the castle diminished and the site became used primarily for county administration and as a prison <i>Overnight Oxford</i>
Day 8 Meal Inclusions: <i>Breakfast</i>	OXFORD-- STRATFORD UPON AVON Breakfast at hotel <ul style="list-style-type: none"> • Oxford University Tour- With your expert Guide showing you around the ancient colleges and cobbled streets, you will be entertained on the way with anecdotes about the many famous characters and academics who have walked down these lanes in times gone by. You will hear about what student life is like today, as well as what it was like centuries ago when the colleges were first founded. Stops include Bodleian Library and Christ Church College. • Anne Hathaway's Cottage- A twelve-roomed farmhouse where Anne Hathaway, the wife of William Shakespeare, lived. <i>Overnight Stratford</i>

<p>Day 9</p> <p>Meal Inclusions: <i>Breakfast</i></p>	<p>STRATFORD UPON AVON</p> <p>Breakfast at Hotel before Coach transfer to Disneyland</p> <ul style="list-style-type: none"> • Shakespeare's Birthplace- The restored 16th century house is believed to be where William Shakespeare was born and spent his childhood years. Students can discover exciting stories while strolling around the house. • Holy trinity Church - the place of baptism and burial of William Shakespeare. • Royal Shakespeare's Company Workshop- Students can take part in a practical workshop which explores the creative choices behind any of the Shakespeare plays. The workshop will focus on a deeper study of the chosen plays language, characters and themes. <p><i>Overnight Stratford</i></p>
<p>Day 10</p> <p>Meal Inclusions: <i>Breakfast</i></p>	<p>STRATFORD UPON AVON—CAMBRIDGE—ROCHESTER--LONDON</p> <p>Breakfast at Hotel before coach transfer</p> <ul style="list-style-type: none"> • Walking tour of Cambridge- See all the central iconic sights including the Old Cavendish Laboratory where important scientific discoveries were made, the Corpus Clock, the Senate House and many of the beautiful central colleges. Hear about the famous students and world changing discoveries, as well as student life, both past and present. • Rochester- The town was for many years a favourite of Charles Dickens, who lived nearby and based many of his novels in the area. Here students will have free time to enjoy the small town. <p><i>Overnight Cambridge</i></p>
<p>Day 11</p> <p>Meal Inclusions: <i>Breakfast</i></p>	<p>LONDON → AUCKLAND</p> <p>Breakfast at Hotel before coach transfer to Airport</p> <ul style="list-style-type: none"> • Depart on Flight to Auckland <p><i>Overnight Travelling</i></p>
<p>Day 12</p>	<p>→ AUCKLAND</p> <p><i>Overnight Travelling</i></p>

INCLUSIONS

- ✓ Return economy flights
- ✓ Return airport transfers from the arrival airport to your hotel
- ✓ All accommodation
- ✓ All transport as outlined in the itinerary
- ✓ Meals as outlined in the itinerary
- ✓ Admission to all activities and attractions as outline in the itinerary
- ✓ Information on resorts, hotels and excursions with guidebooks and maps available on request
- ✓ 24 hour emergency back-up and support
- ✓ Kiwi Holidays Travel Insurance

EXTRAS TO BUDGET FOR

- Visas (if required)
- Transport to and from Auckland Airport
- Meals and drinks not included in the itinerary
- Drinks - water is provided with meals. Soft drinks and juices at extra cost
- Additional excursions and activities not mentioned in the itinerary
- Spending money – souvenirs and extras

ORGANISING YOUR STUDY TOUR IN 7 EASY STEPS



1. Itinerary Planning
2. Launch
3. Booking
4. Documents Collecting and Tour Prep
5. Confirming
6. Departure
7. Return Meeting

AMMENDMENTS AND CANCELLATIONS

Changes are permitted and any additional charges will be assessed at time of change. If you wish to cancel or amend all or part of your tour you should advise us in writing (by letter, email or fax) as soon as possible. A cancellation or amendment is effective only when received in writing by the company from the group contact who signed the booking form. Any new person added to the booking must provide a signed acknowledgement. PLEASE NOTE: If any cancellation reduces the number of paying group members below the minimum number required for a particular tour price or concession (including free places), the invoice will be adjusted accordingly for all remaining group members.

TOUR COST GUARANTEE

Once your tour has been booked and first deposit paid, Travelbound guarantee that the price of your tour is fixed. This means that your tour price is not subject to any unpredictable extra costs associated with currency fluctuations. **Please note**, as this is a quotation only, we are not holding any of your travel arrangements. To secure your booking you need to provide written confirmation of the tour itinerary, student/staff numbers and overall cost as approved.